

2755 Series

THOMAS
by Gardner Denver

FEATURES

- > Monolithic head
- > Epoxy coated wetted parts
- > 17mm shaft & bearing compliment
- > Oil-less operation
- > Permanently lubricated bearings
- > Stainless steel valves
- > Die-cast aluminum components
- > Proven WOB-L technology
- > Field service capability
- > Thermally protected motor
- > Designed and tested per Agency standards
- > RoHS compliant

Declaration documentation available upon request

TYPICAL APPLICATIONS

- > Blood or Laboratory Analyzers
- > Beverage Dispensing
- > Dental Equipment
- > Ozone Generators
- > Business Machines (Copiers)
- > Vacuum Frames
- > Waveguide Pressurization
- > Packaging Equipment

BASE MODELS

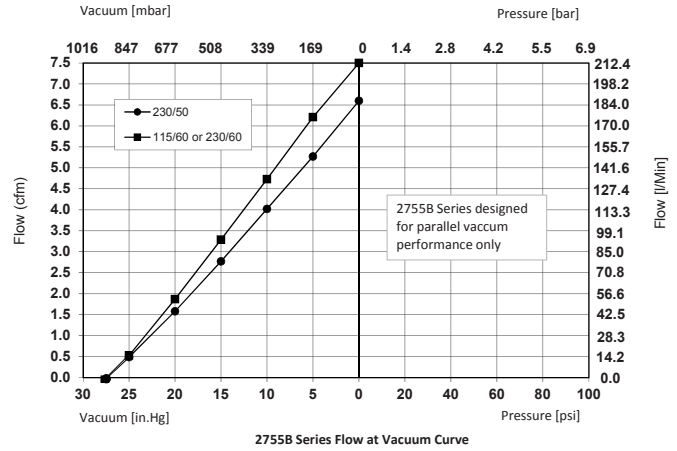
- 2755BE75
(115/60/1)
- 2755BGHI75
(230/601/1 & 220-240/50/1)
- 2755CE60
(115/60/1)
- 2755CGHI60
(230/601/1 & 220-240/50/1)
- 2755TE48/40
(115/601/1)
- 2755TGHI52/48
(230/60/1 & 220-240/50/1)
- 2755VEF75
(115/601/1 & 110/50/1)
- 2755VHI75
(220-240/50/1)



WOB-L

2755 Series

Flow	Up to 7.5 cfm (212.4 l/min)
Max. pressure	N/A
Max. vacuum	Up to 93% local barometer



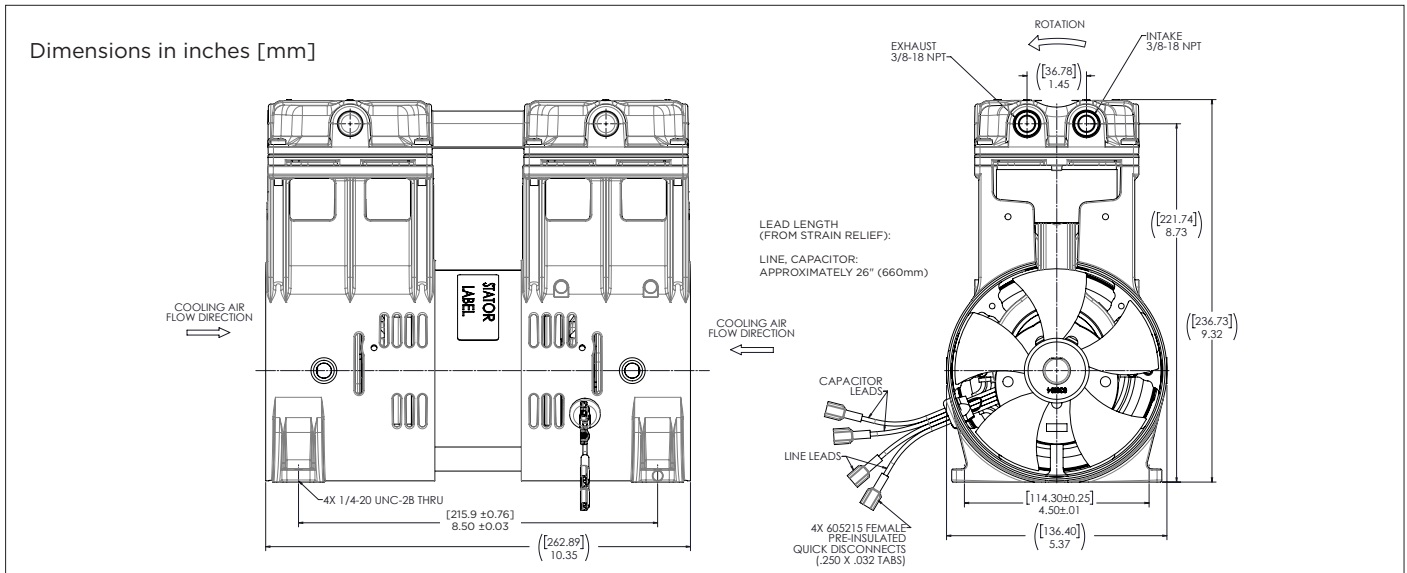
NOTE: All test values are nominal and for reference only. They are not guaranteed maximum or minimum limits, nor do they imply mean or median.

PERFORMANCE DATA	T17-0289		T17-0290	
Model Number	2755BE75		2755BGHI75	
Head Configuration	Vacuum parallel flow		Vacuum parallel flow	
Stroke	0.75 in. (19.0 mm)		0.75 in. (19.0 mm)	
Nominal voltage input	115/60/1		230/50/1 230/60/1	
Max. open air flow	7.5 cfm (212.4 l/min)		6.6 cfm (186.9 l/min) 7.5 cfm (212.4 l/min)	
Max. rated vacuum	93% local barometer		93% local baro. 93% local baro.	
Current at rated vacuum	2.3A		1.2A 1.4A	
Power at rated vacuum	230W		240W 270W	
Speed at rated vacuum	1775 rpm		1475 rpm 1765 rpm	
Max. vacuum restart	N/A		N/A	
Max. pressure	N/A		N/A	
Max. pressure restart	N/A		N/A	

ELECTRICAL DATA	T17-0289		T17-0290	
Motor type (Capacitance)	P.S.C. [20 µF]		P.S.C. [12.5 µF]	
Motor locked rotor current	17.7A		8.7A 7.8A	
Motor insulation class	B		B	
Thermal switch (Open temperature)	Yes [293°F (145°C)]		Yes [275°F (135°C)]	
Lead wire color, gauge	Brown(hot), blue(neutral), 18 AWG		Brown(hot), blue(neutral), 18 AWG	
Capacitor lead wire color, gauge	Black, black, 18 AWG		Red, red, 18 AWG	

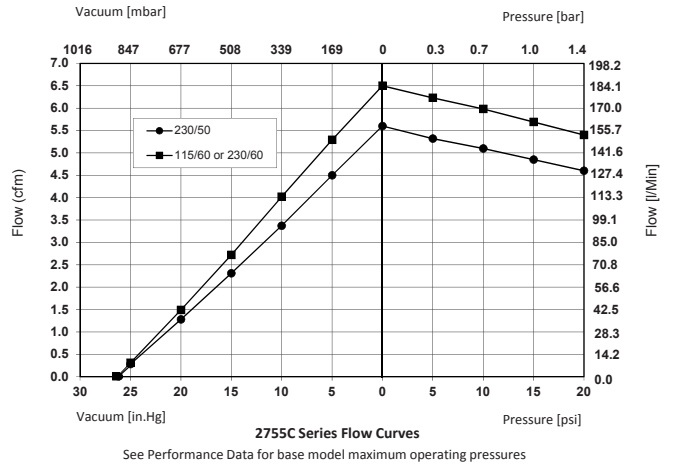
GENERAL DATA	T17-0289		T17-0290	
Operating ambient temperature	50°F to 104°F (10°C TO 40°C)		50°F to 104°F (10°C TO 40°C)	
Safety Certification	UR		TUV	
Net weight	21.5 lbs (9.8 kg)		22.6 lbs (10.3 kg)	

PRODUCT DIMENSIONS



2755 Series

Flow	Up to 6.5 cfm (184 l/min)
Max. pressure	Up to 20 psi (1.4 bar)
Max. vacuum	Up to 91% local barometer



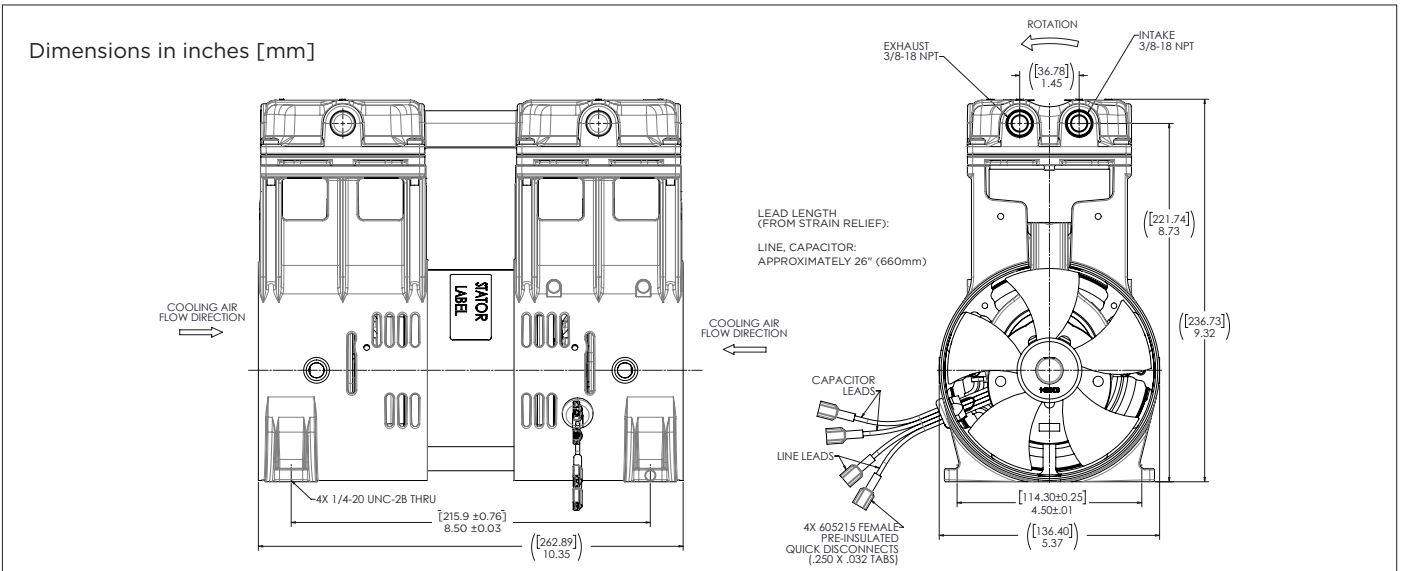
NOTE: All test values are nominal and for reference only. They are not guaranteed maximum or minimum limits, nor do they imply mean or median.

PERFORMANCE DATA		T17-0291	T17-0292	
Model Number	2755CE60	2755CGHI60		
Head Configuration	Pressure/vacuum parallel flow	Pressure/vacuum parallel flow		
Stroke	0.60 in. (15.2 mm)	0.60 in. (15.2 mm)		
Nominal voltage input	115/60/1	230/50/1	230/60/1	
Max. open air flow	6.5 cfm (184 l/min)	5.6 cfm (158.6 l/min)	6.5 cfm (184 l/min)	
Max. rated pressure	15 psi (1.0 bar)	20 psi (1.4 bar)	20 psi (1.4 bar)	
Current at rated pressure	4.7A	2.0A	5.2A	
Power at rated pressure	520W	460W	580W	
Speed at rated pressure	1690 rpm	1415 rpm	1660rpm	
Max. pressure restart	N/A	N/A		
Max. vacuum	91% local barometer	91% local barometer		
Max. vacuum restart	N/A	N/A		

ELECTRICAL DATA		P.S.C. [20 µF]		P.S.C. [12.5 µF]	
Motor type (Capacitance)	P.S.C. [20 µF]	P.S.C. [12.5 µF]			
Motor locked rotor current	17.7A	8.7A	7.8A		
Motor insulation class	B	B			
Thermal switch (Open temperature)	Yes [293°F (145°C)]	Yes [275°F (135°C)]			
Lead wire color, gauge	Brown(hot), blue(neutral), 18 AWG	Brown(hot), blue(neutral), 18 AWG			
Capacitor lead wire color, gauge	Black, black, 18 AWG	Red, red, 18 AWG			

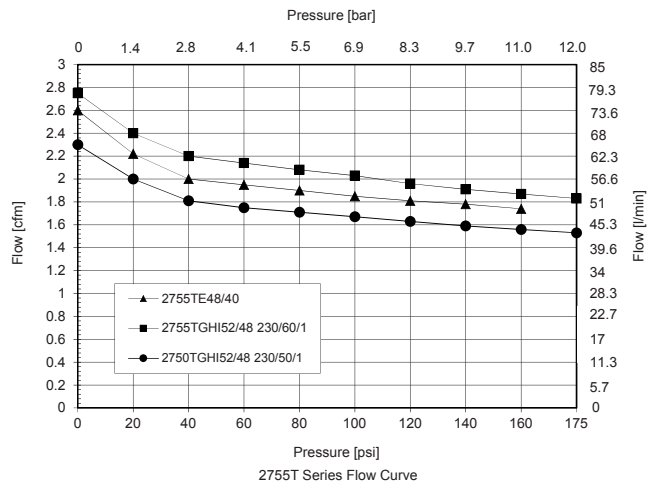
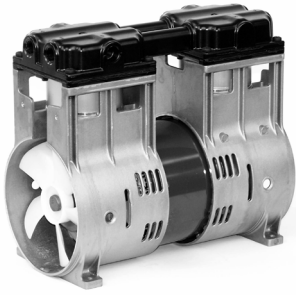
GENERAL DATA		50°F to 104°F (10°C TO 40°C)	
Operating ambient temperature	50°F to 104°F (10°C TO 40°C)	50°F to 104°F (10°C TO 40°C)	
Safety Certification	UR	TUV	
Net weight	21.5 lbs (9.8 kg)	22.6 lbs (10.3 kg)	

PRODUCT DIMENSIONS



2755 Series

Flow	Up to 2.75 cfm (77.9 l/min)
Max. pressure	Up to 175 psi (12.1 bar)
Max. vacuum	N/A



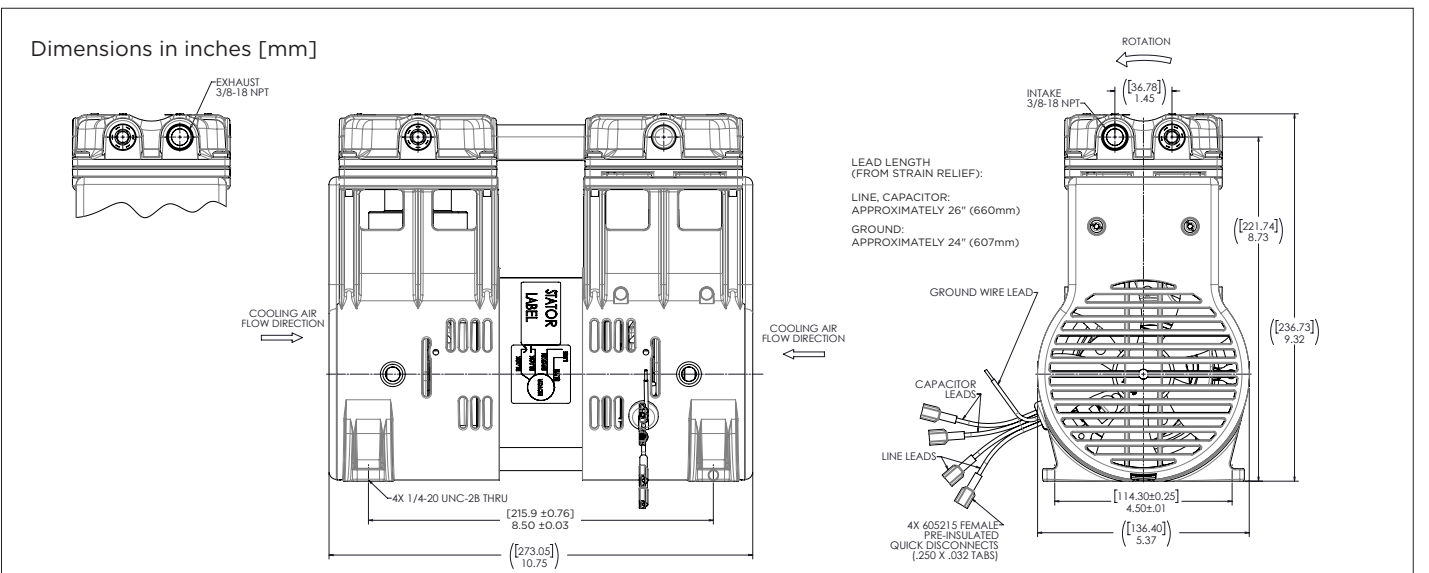
NOTE: All test values are nominal and for reference only. They are not guaranteed maximum or minimum limits, nor do they imply mean or median.

PERFORMANCE DATA	T17-0273	T17-0271	
Model Number	2755TE48/40	2755TGH152/48	
Head Configuration	Two stage pressure flow	Two stage pressure flow	
Stroke (Primary/secondary)	0.48 in. (12.2 mm)/0.40 in. (10.2mm)	0.52 in (13.2 mm) / 0.48 in. (12.2 mm)	
Nominal voltage input	115/60/1	230/50/1	230/60/1
Max. open air flow	2.60 cfm (73.6 l/min)	2.30 cfm (65.1 l/min)	2.75 cfm(77.9 l/min)
Max. rated pressure	160 psi (11.0 bar)	175 psi (12.1 bar)	175 psi (12.1 bar)
Current at rated pressure	4.8A	2.6A	2.9A
Power at rated pressure	540W	580W	645W
Speed at rated pressure	1680 rpm	1380 rpm	1640 rpm
Max. pressure restart	N/A	N/A	
Max. vacuum	N/A	N/A	
Max. vacuum restart	N/A	N/A	

ELECTRICAL DATA	T17-0273		T17-0271	
Motor type (Capacitance)	P.S.C. [20 µF]		P.S.C. [15 µF]	
Motor locked rotor current	17.7A		8.5A	7.7A
Motor insulation class	B		B	
Thermal switch (Open temperature)	Yes [293°F (145°C)]		Yes [275°F (135°C)]	
Lead wire color, gauge	Brown(hot), blue(neutral), 18 AWG		Brown(hot), blue(neutral), 18 AWG	
Capacitor lead wire color, gauge	Black, black, 18 AWG		Red, red 18 AWG	

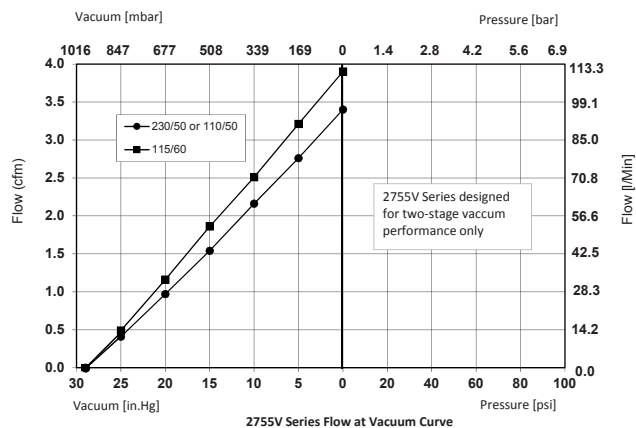
GENERAL DATA	T17-0273		T17-0271	
Operating ambient temperature	50°F to 104°F (10°C TO 40°C)		50°F to 104°F (10°C TO 40°C)	
Safety Certification	UR		TUV	
Net weight	21.7 lbs (9.8 kg)		23.0 lbs (10.4 kg)	

PRODUCT DIMENSIONS



2755 Series

Flow	Up to 3.9 cfm (110.4 l/min)
Max. pressure	N/A
Max. vacuum	Up to 98% local barometer



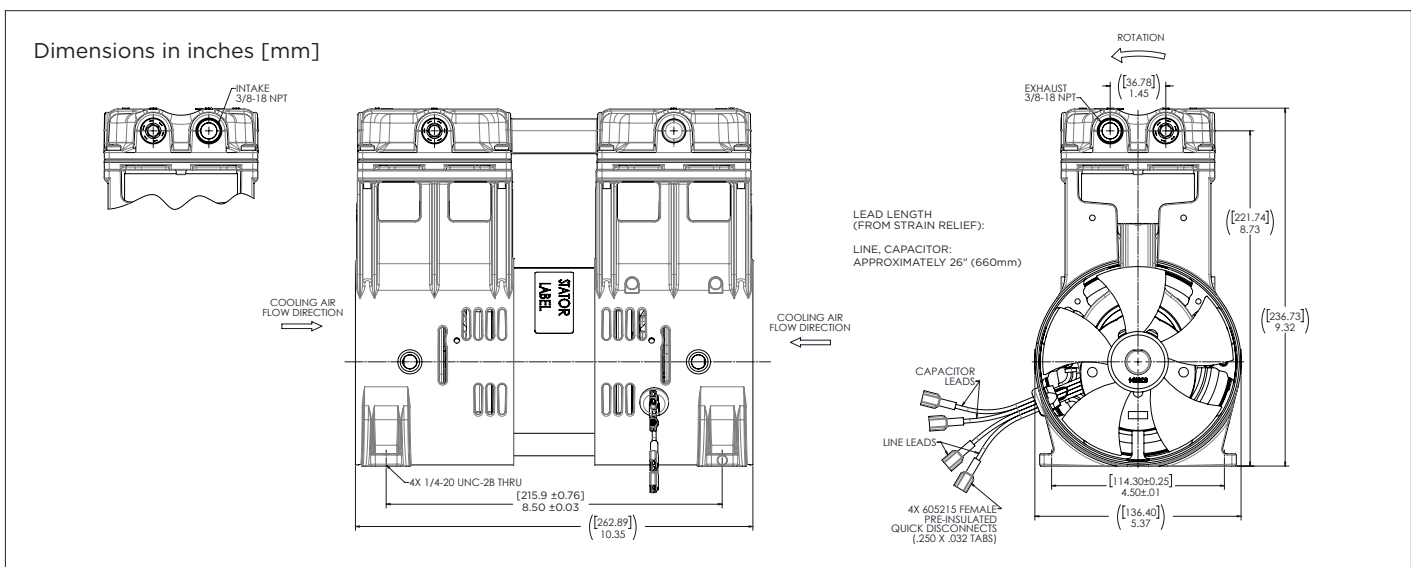
NOTE: All test values are nominal and for reference only. They are not guaranteed maximum or minimum limits, nor do they imply mean or median.

PERFORMANCE DATA		T17-0293		T17-0294	
Model Number	2755VEF75		2755VHI75		
Head Configuration	Two stage vacuum flow		Two stage vacuum flow		
Stroke	0.75 in (19.0 mm)		0.75 in. (19.0 mm)		
Nominal voltage input	115/60/1	110/50/1	230/50/1		
Max. open air flow	3.9 cfm (110.4 l/min)	3.4 cfm (96.3 l/min)	3.4 cfm (96.3 l/min)		
Max. rated vacuum	98% local baro.	98% local baro.	98% local barometer		
Current at rated vacuum	2.3A	3.5A	1.2A		
Power at rated vacuum	230W	220W	220W		
Speed at rated vacuum	1775 rpm	1480 rpm	1480 rpm		
Max. vacuum restart	N/A		N/A		
Max. pressure	N/A		N/A		
Max. pressure restart	N/A		N/A		

ELECTRICAL DATA	
Motor type (Capacitance)	P.S.C. [20 µF]
Motor locked rotor current	17.7A
Motor insulation class	B
Thermal switch (Open temperature)	Yes [293°F (145°C)]
Lead wire color, gauge	Brown(hot), blue(neutral), 18 AWG
Capacitor lead wire color, gauge	Black, black, 18 AWG

GENERAL DATA	
Operating ambient temperature	50°F to 104°F (10°C TO 40°C)
Safety Certification	UR
Net weight	21.5 lbs (9.8 kg)

PRODUCT DIMENSIONS



PUMP AND COMPRESSOR SOLUTIONS FOR OEMS WORLDWIDE

gd-thomas.com


by Gardner Denver



Gardner Denver Thomas GmbH

Livry-Gargan-Str. 10
82256 Fürstenfeldbruck
Germany

T +49 8141 2280 0
F +49 8141 8892136

thomas.de@gardnerdenver.com

Gardner Denver Thomas Pneumatic Systems (Wuxi) Co. Ltd.

1 New Dong'an Road, Shuofang Town
Xinwu District, Wuxi
Jiangsu, 214142 China

T +86 510 6878 2258
F +86 510 6878 2200

thomas.cn@gardnerdenver.com

Gardner Denver Thomas, Inc.

1419 Illinois Avenue
Sheboygan, WI 53081
USA

T +1 920 4574891
F +1 920 4514276

td.usa@gardnerdenver.com

The information presented in this material is based on technical data and test results of nominal units. It is believed to be accurate and reliable and is offered as an aid to help in the selection of Thomas products. It is the responsibility of the user to determine the suitability of the product for the intended use and the user assumes all risk and liability in connection there with. Thomas does not warrant, guarantee or assume any obligation or liability in connection with this information.

Models presented in this catalog are representative of the product family. Photos of products pictured in this catalog do not necessarily represent a specific model number. To obtain further information for custom options, contact your local Thomas office.

Printed in U.S.A Form No. 850-4026 09/2017 © Gardner Denver Thomas, Inc. All rights reserved.